



Caleb Cole

*text by Joshi Radin
layout by Melissa Newman-Evans*



Caleb Cole is most excited by artists who use photography in nontraditional ways. He knows how to make pretty pictures, but he's more interested in crossing the medium or mashing it up. "I love August Sander," he says, "but I'm not like him."

Cole begins with an idea and then imposes a set of rules for its exploration, examining the original concept through a process that places his images in perpetual motion, swinging between the poles of repetition and difference.

In his series *Odd One Out*, the artist examines a selection of old group photos. From this data set, he erases all but one figure from the group (likely a person wearing an affectless, blank expression). We focus on this individual plucked from the crowd. Confined by the white space where companions once crowded, she is alone even in the company of others.

The nature of the series is very democratic. No one image trumps the others. Otherwise mundane images – from class photos, reunions, school bands, clubs, and sometimes more intimate moments such as weddings and scenes of home life – all serve to demonstrate the universal and arbitrary nature of lives lived in isolation. Cole exposes a very intimate experience and yet persistently depersonalizes it.

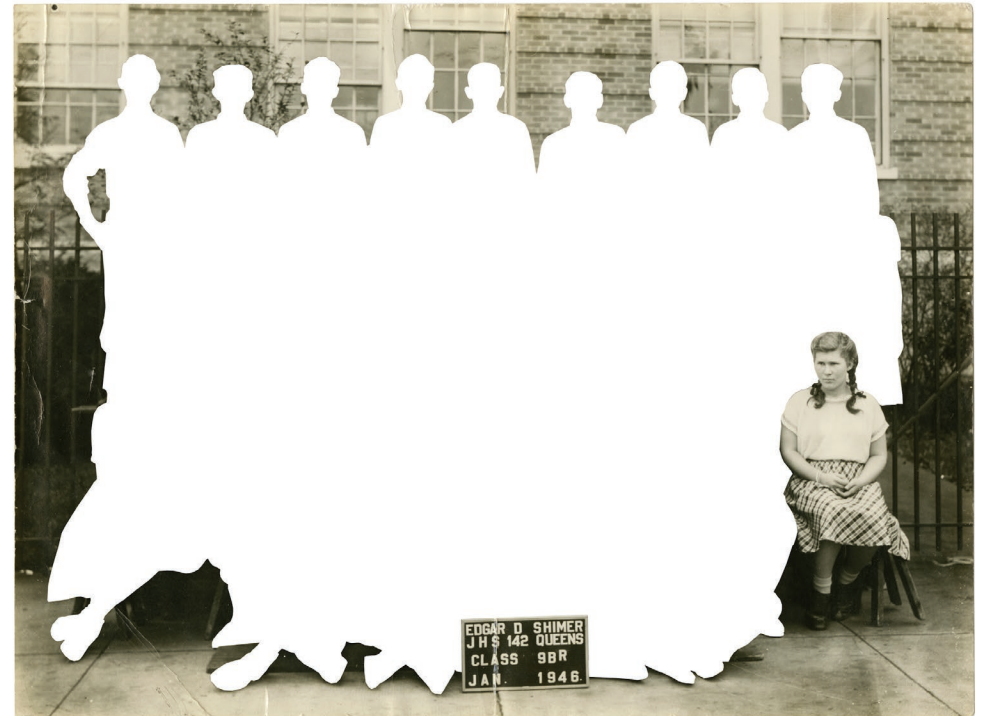
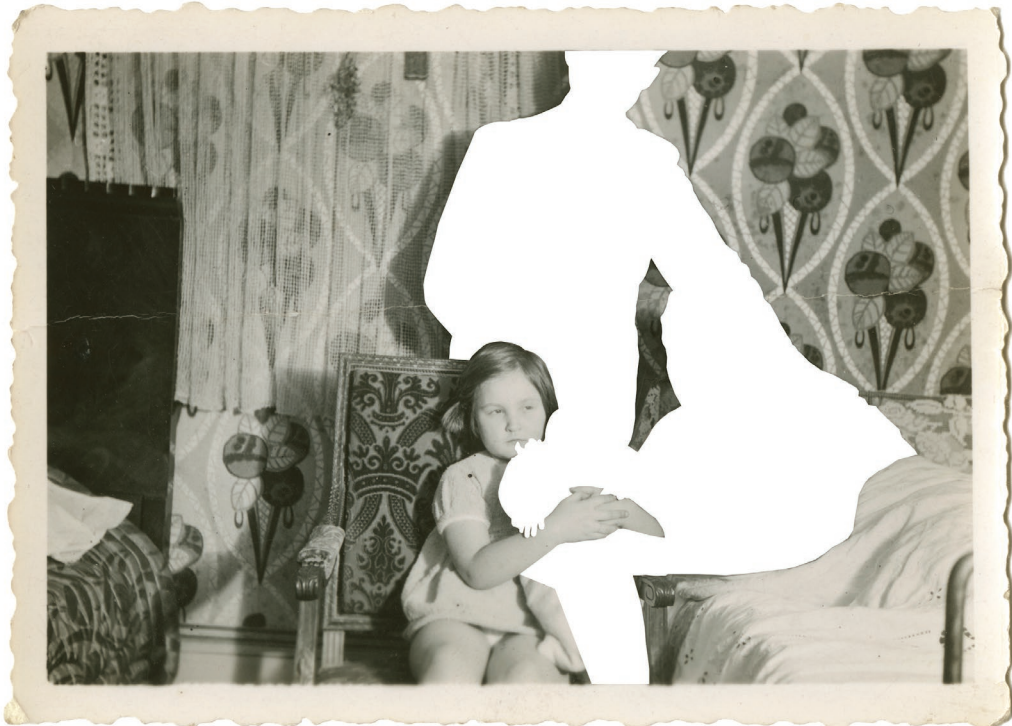
Much like in his project *Other People's Clothes*, the total series achieves something greater than the sum of its parts. Precisely because of the insistent repetition, the random isolation of these particular individuals in the image becomes a point of unity. As a group, they are all alone together.

*Opposite: In the Band, 2010
Above: Maid of Honor, 2010*

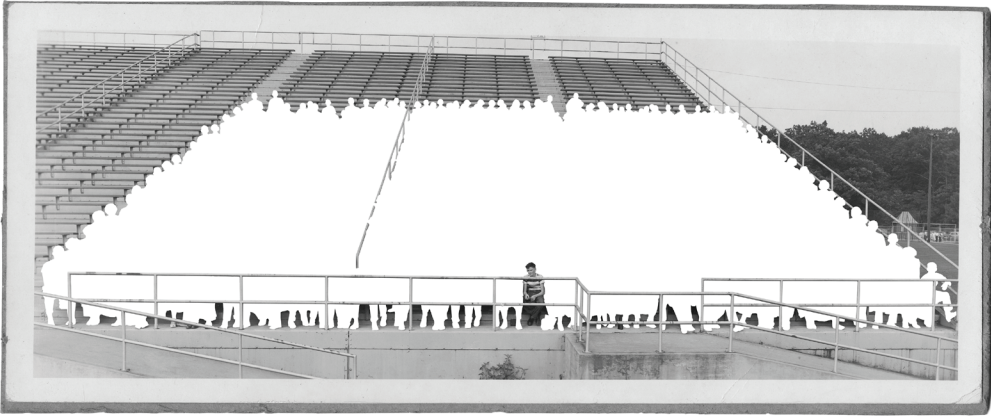


Above: After School, 2012 // Below: Big Sister, 2012

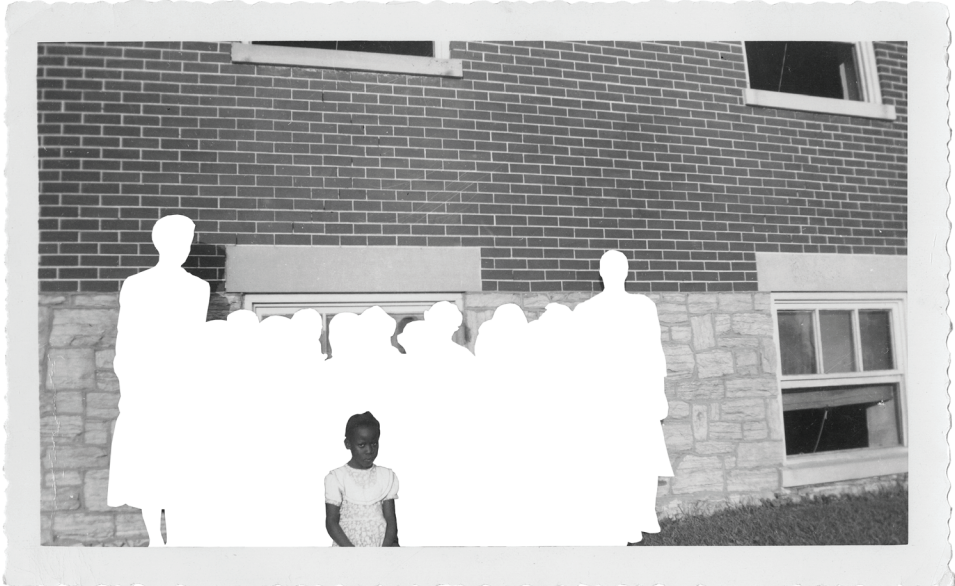
Opposite, above: The Company, 2010 // Opposite, below: JHS w/w 9BR, 2012

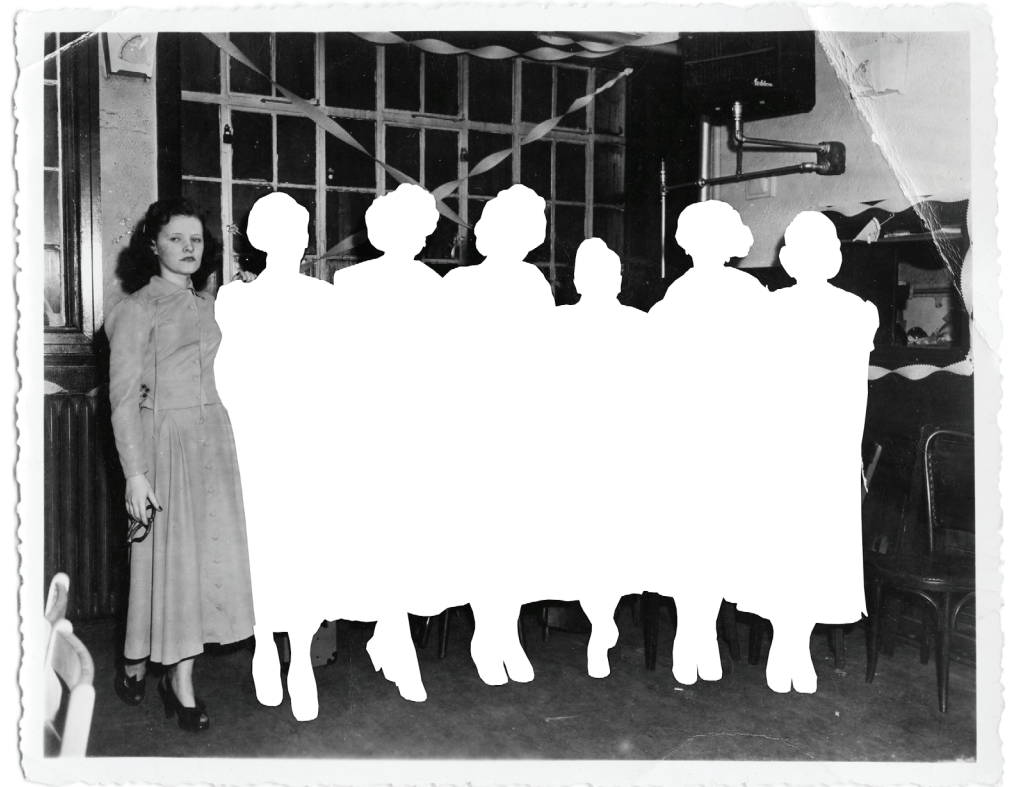


EDGAR D. SHIMER
JHS 142 QUEENS
CLASS 9BR
JAN. 1946.



*Opposite: above: The Professor, 2012 // Opposite, below: Bad News, 2012
Top: There Yet, 2012 // Middle: Pep Rally, 2012 // Bottom: The Only One in School, 2012*





*Above: Boys' Club, 2010 // Below: Tuba Player, 2012
Opposite, above: With the Girls, 2010 // Opposite, below: Down in Front, 2012*

